



NORTHWEST BACHMAN CENTER

For lease:
NWC Northwest Hwy
& Timberline
Dallas, TX

VENTURE

CRAIG JOHNSON
(214) 769-9229
CJOHNSON@VENTUREDFW.COM

Metrics

NWC Northwest Hwy & Timberline
Dallas, TX

Location

NWC Northwest Hwy & Timberline

Size

Building 1
8,239 SF

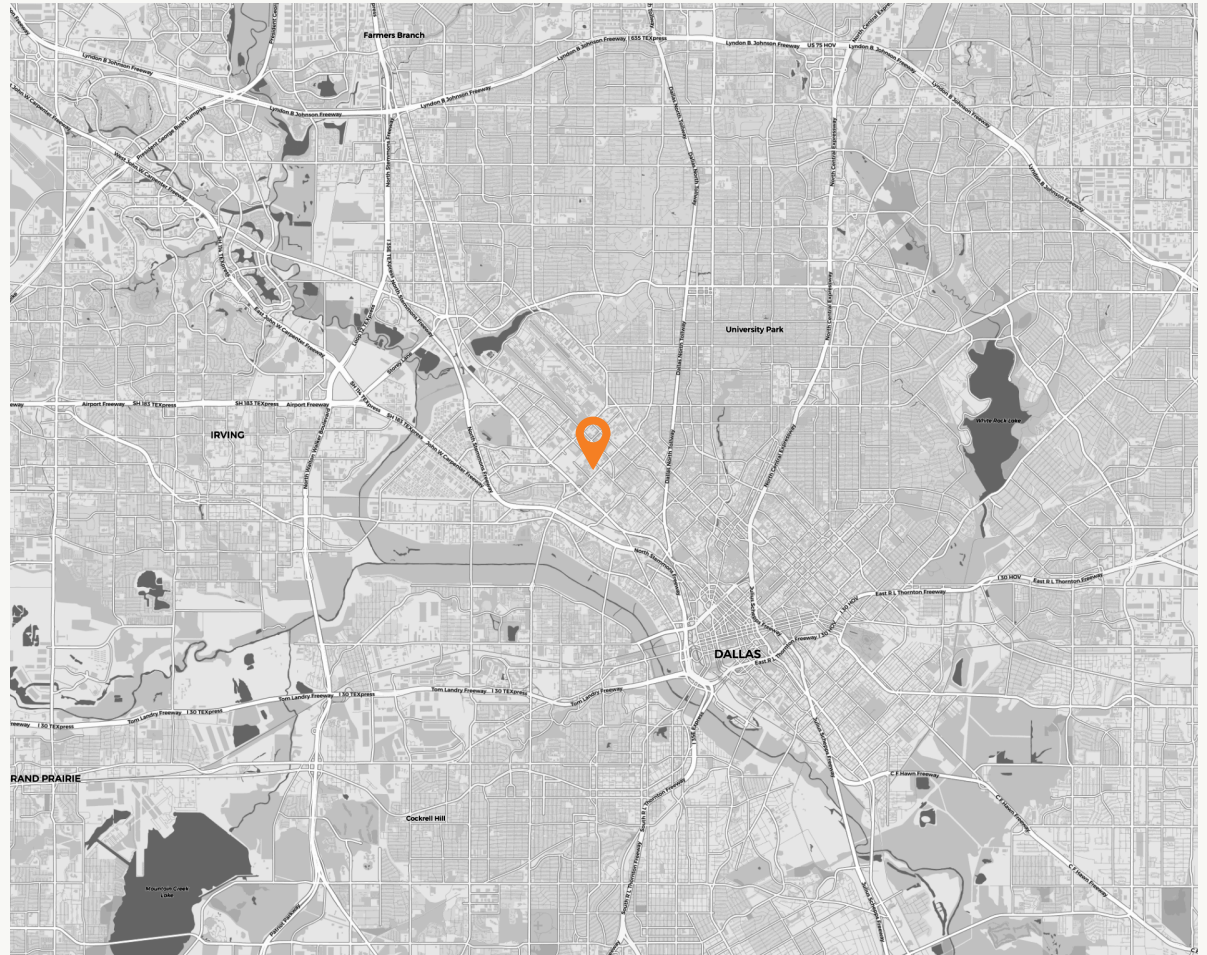
Building 2
4,954 SF

Available Spaces

Building 1
Suite 103
1,840 SF

Traffic Counts

Northwest Hwy
45,424 VPD



Area Attractions



VENTURE

CRAIG JOHNSON
(214) 769-9229
CJOHNSON@VENTUREDFW.COM

Property Highlights

NWC Northwest Hwy & Timberline
Dallas, TX

1. Retail opportunity
2. 1,840 SF end cap available
3. High traffic location across from Bachman Lake
4. Great visibility on Northwest Highway

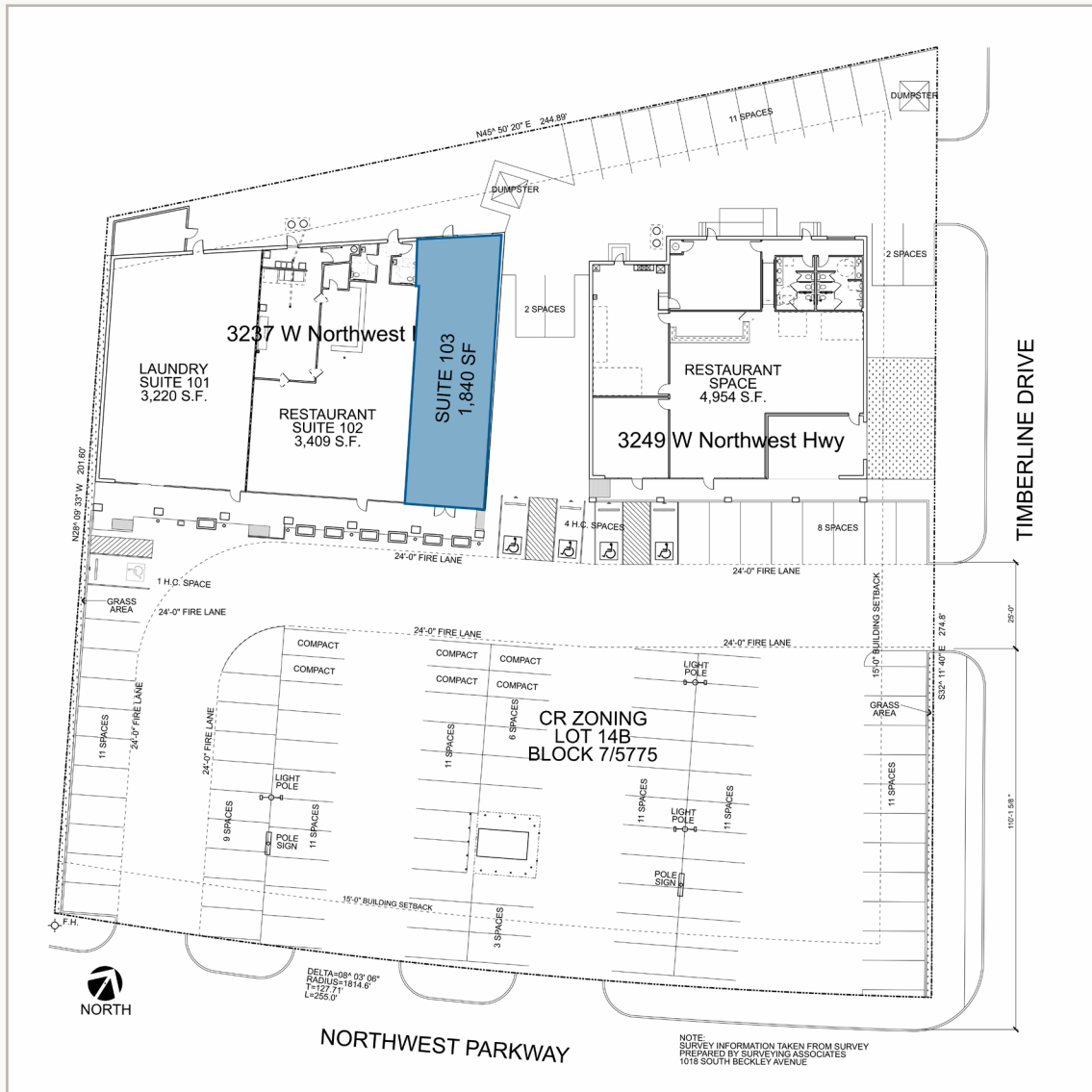


2025 Demographic Summary

	1 MILE	3 MILES	5 MILES
EST. POPULATION	19,649	79,256	272,512
EST. DAYTIME POPULATION	5,464	102,063	338,788
EST. AVG. HH INCOME	\$64,225	\$155,188	\$188,314

Site Plan

NWC Northwest Hwy & Timberline
Dallas, TX



SUITE	TENANT	SQUARE FEET
BUILDING 1		
101	LAUNDRY	3,220
102	RESTAURANT	3,409
103	AVAILABLE	1,840
BUILDING 2		
	RESTAURANT	4,954

Close Aerial

NWC Northwest Hwy & Timberline
Dallas, TX



Far Aerial

NWC Northwest Hwy & Timberline
Dallas, TX



NWC Northwest
Hwy & Timberline
Dallas, TX

Craig Johnson
Senior Vice President
(214) 769-9229
cjohnson@venturedfw.com

(214) 378-1212

www.VentureDFW.com

8235 Douglas Ave
Suite 720
Dallas, Texas 75225

VENTURE

*The information contained herein was obtained from sources deemed reliable; however, Venture Commercial Real Estate, LLC, makes no guarantees, warranties or representations as to the completeness or accuracy thereof. The presentation of this property is subject to errors; omissions; change of price, prior to sale or lease; or withdrawal without notice.

